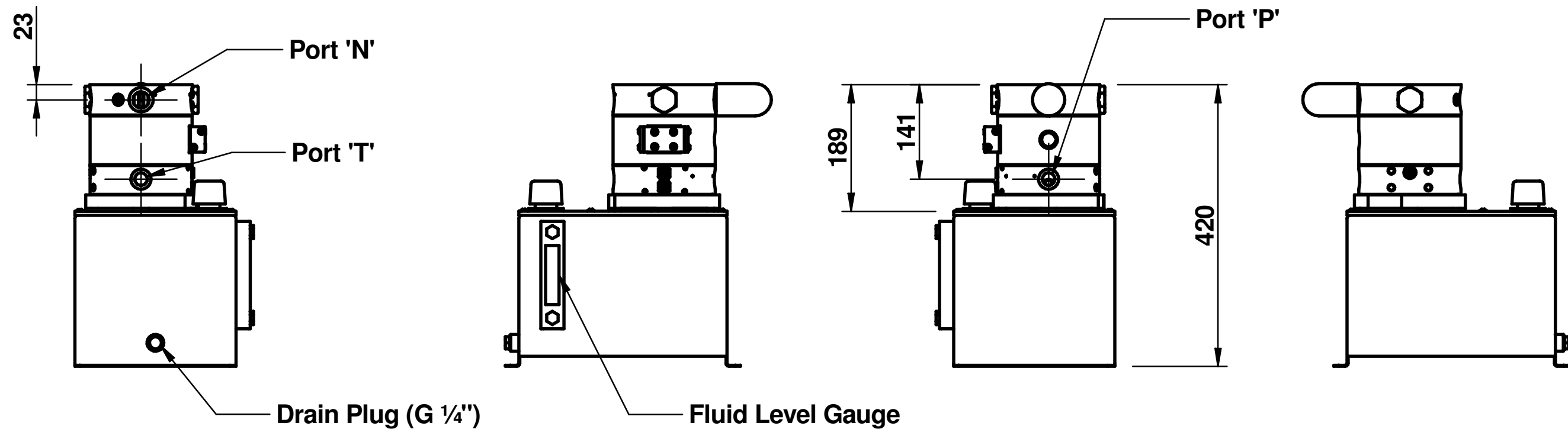
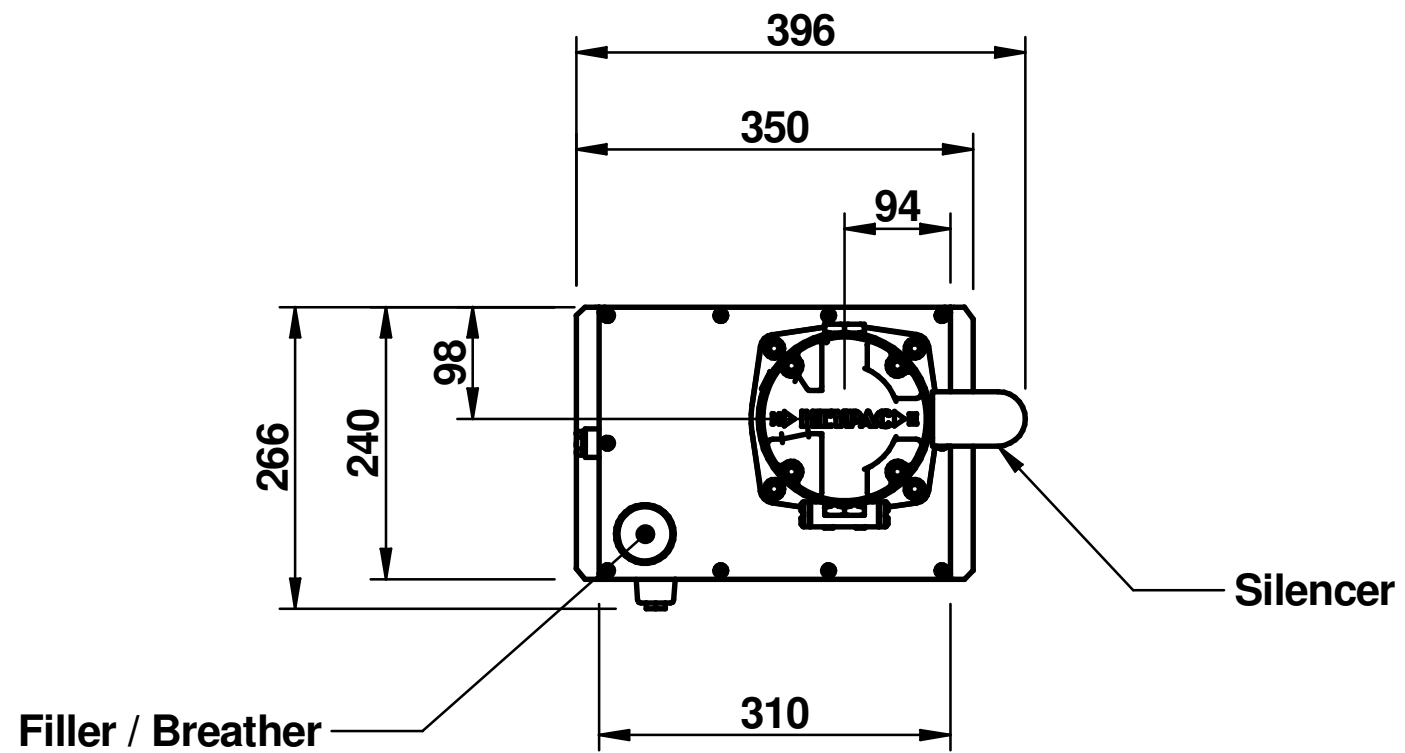


Port	BSP Pumps	SAE Pumps
Port N	G 3/4"	3/4" NPT
Port P	G 1/2"	8 SAE
Port T	G 1/2"	8 SAE



Notes: The pump may be mounted @ 90°, 180° or 270° to that shown.
 An extra 'P' Port is available below the lid if required, see the T1 configuration diagram for more details.
 Reservoir useable capacity - approximately 10 litres.

HEYPAC Ltd

Unit 3 The Royston Centre
 Ash Vale Surrey GU12 5PQ
 Tel: 01 252 511 003
 Fax: 01 252 519 003
 email: enquiries@heypac.com

All dimensions are in mm. General tolerances +/- 1mm

DHM 17/12/2009

Product Model: **GX20/30/40 - *** - T10**

Diagram Ref: **g20t10**

Sht No:1

A