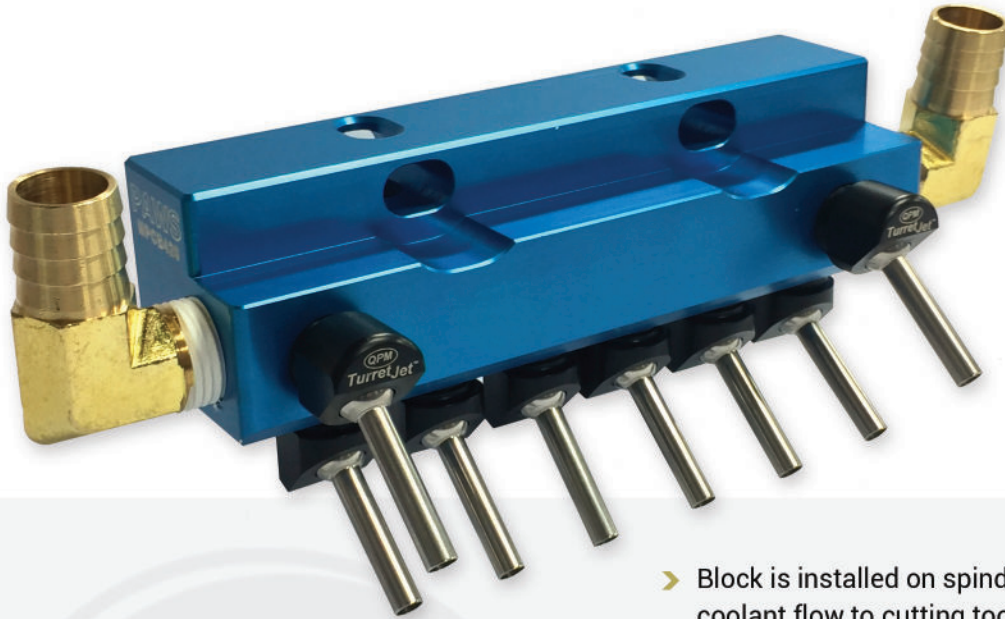


MULTI-PORT COOLANT BLOCK

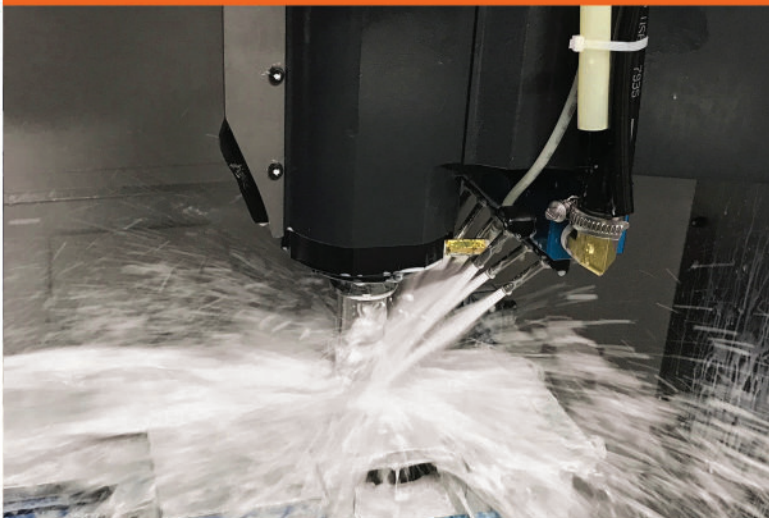
DESIGNED FOR INSTALLATION ON BROTHER VERTICAL MILLING CENTERS



PAWS WORKHOLDING MPCB420

- Block is installed on spindle head of VMC to provide constant coolant flow to cutting tools.
- Eight (8) fully adjustable, 5mm coolant nozzles.
- Installation kits available to install on Brother S300, S500, S700, S1000, R450 & R650 VMC's.
- Nozzles are compact and out of the way so they are not easily bumped out of position - Direct coolant exactly where you need it.

↑ INCREASE PROCESS STABILITY



8 ADJUSTABLE COOLANT NOZZLES

