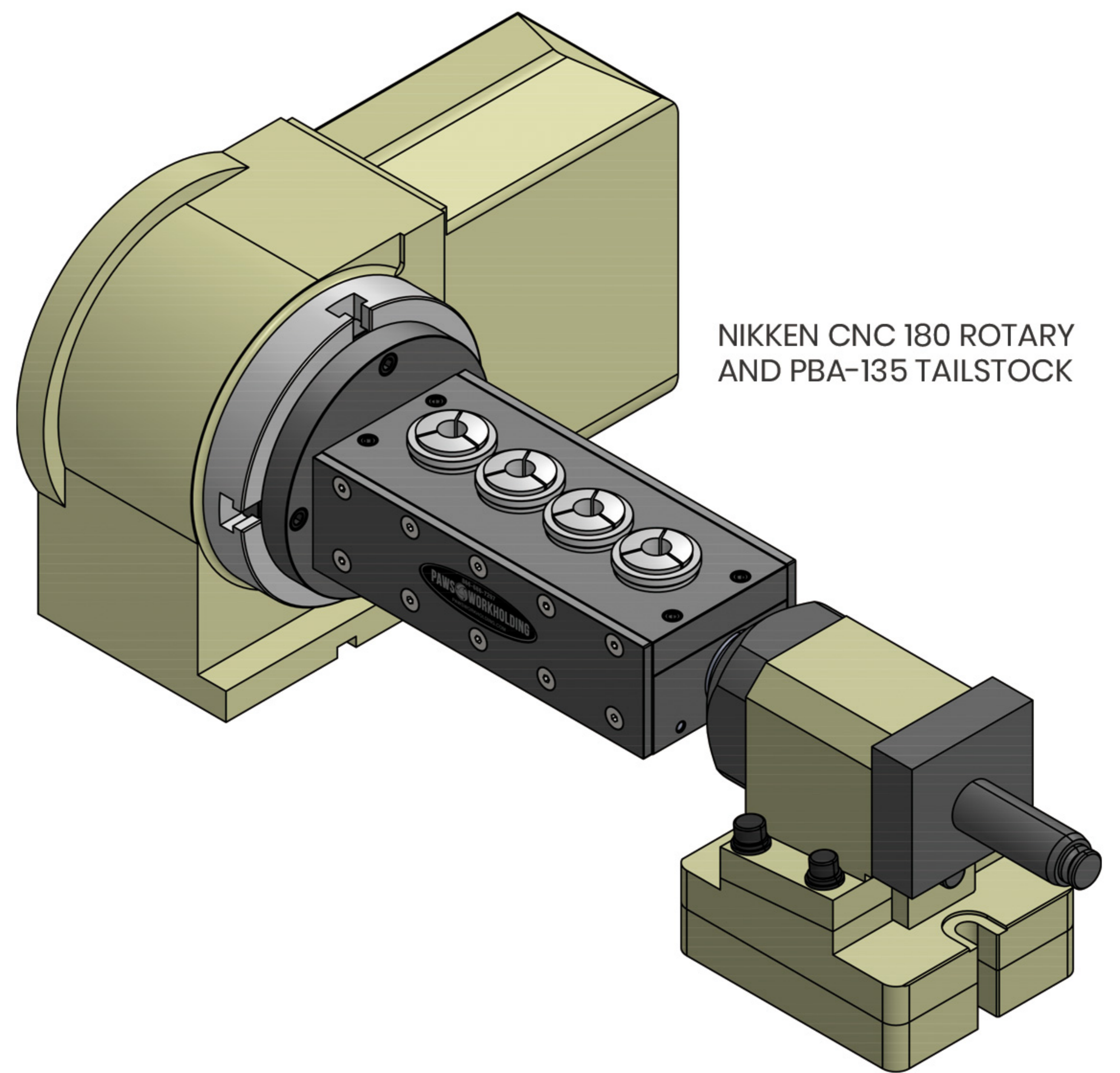


PAWS 4 STATION INDEXABLE IN-LINE 5C MULTI-COLLET FIXTURE

AUTOMATED MULTIPLE-PART WORKHOLDING

Perfect for gripping parts on the outside diameter, the PAWS 5C Multi-Collet fixture allows you to hold multiple-parts on one fixture for gang machining small parts. Ideal for secondary milling operations.



NIKKEN CNC 180 ROTARY
AND PBA-135 TAILSTOCK

NOTE: HYDRAULIC PUMP AND 5C COLLETS SOLD SEPARATELY.

PART# BMCF-IDIL04-5C



Uniform Centerline

Fixture has uniform 2.00" centerline with special alignment feature to eliminate radial movement of individual collets.



Push-to-Close Clamping

System uses "Push-to-Close" clamping technology, using a collet sleeve that slides up to close the 5C collet.



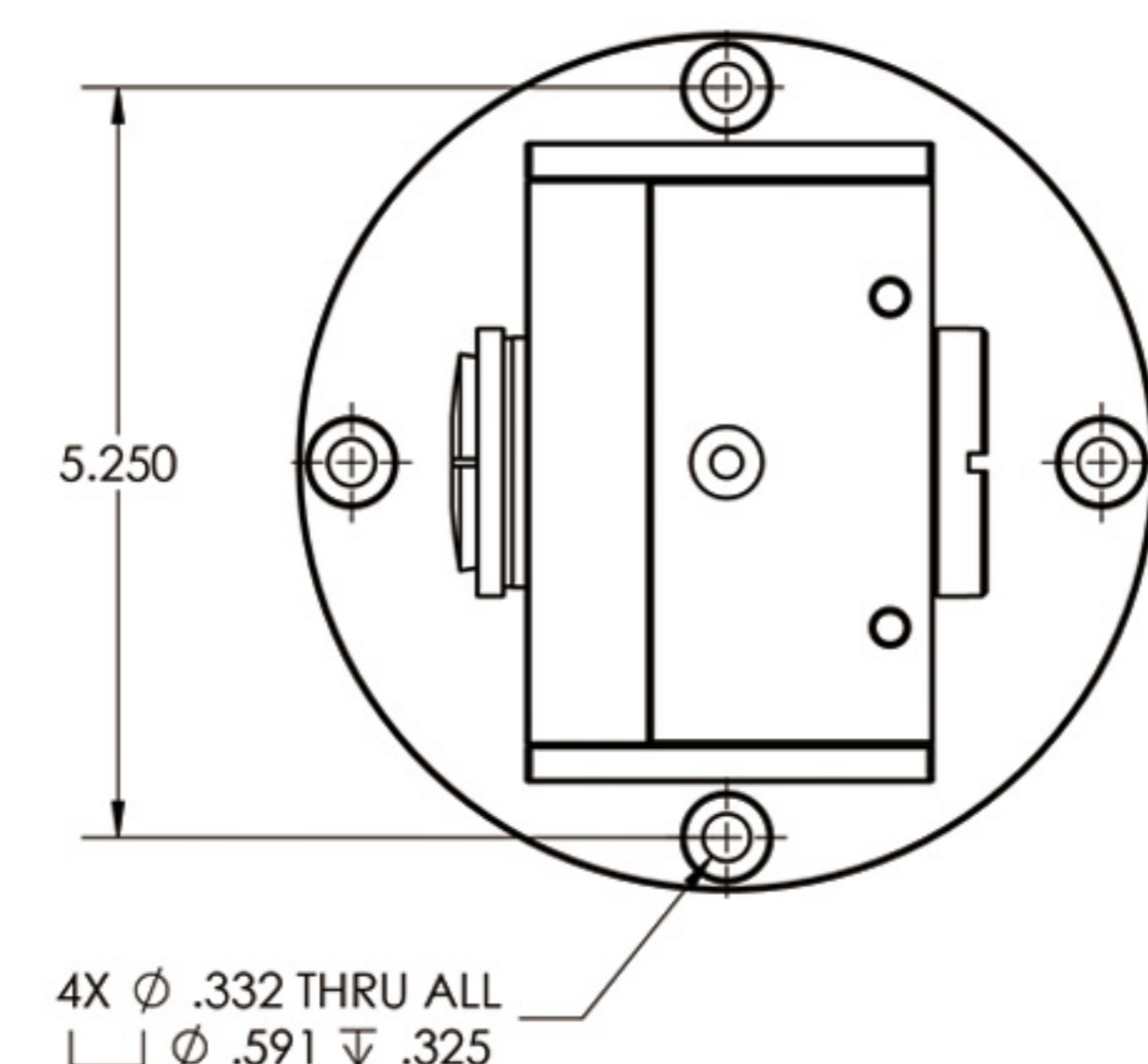
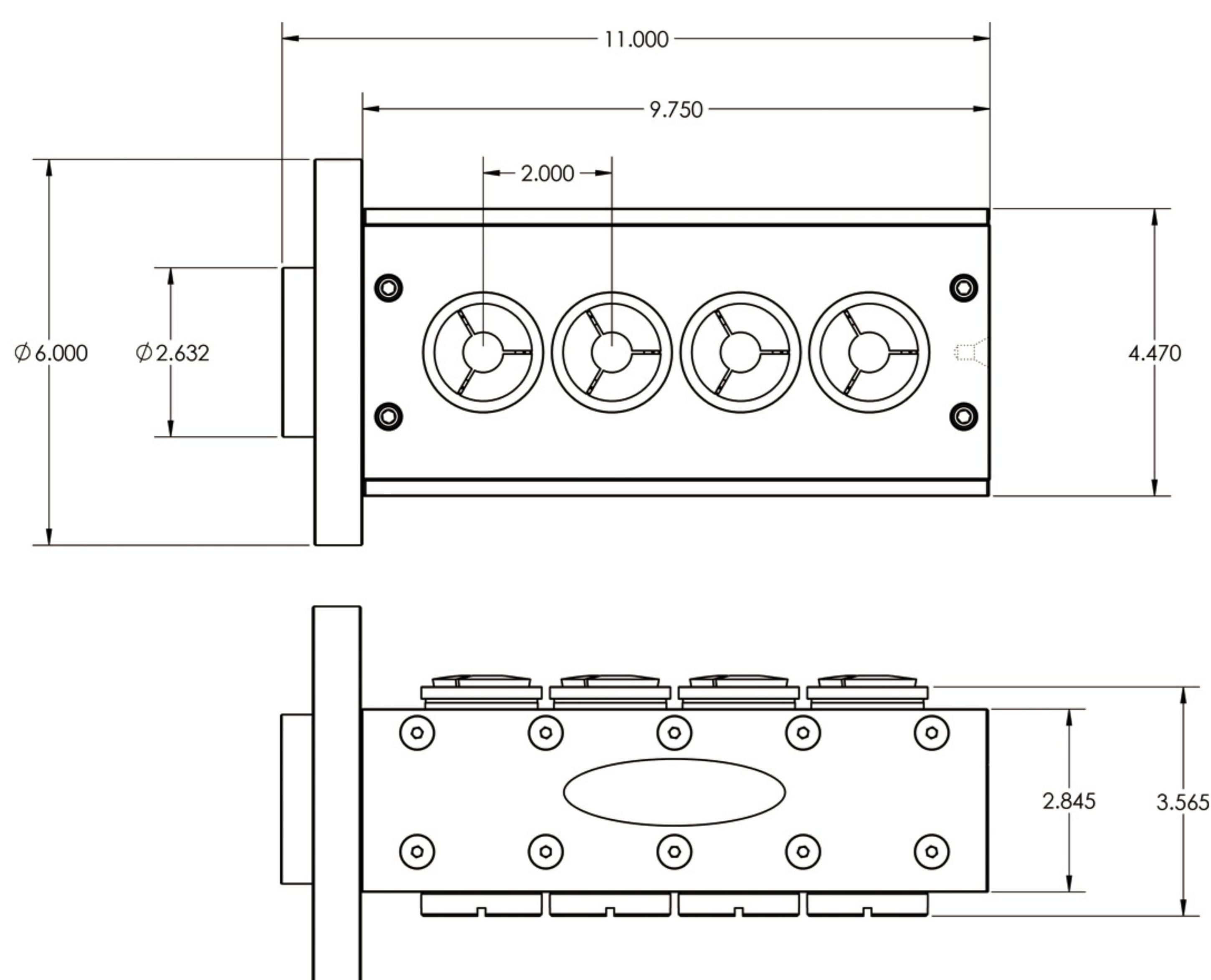
Custom Faceplate

Custom faceplate allows system to attach to most standard rotary tables. Specify model when ordering.



Fast Clamping

Hydraulically activated for fast clamping. Run at clamping pressures up to 2,500 lbs.



FREE ENGINEERING CONSULTATION!

Call and ask for a Sales Engineer to discuss your application today